

Star Line 85Alu



This family represents one of the most prestigious TELE System's satellite antennas. The reflector made of aluminium, the back support in galvanised steel and the LNB arm made of electro-galvanised steel, make this antenna one of our best high-range products.

STAR LINE ALU	85
Aluminium	•
Steel	-
Anthracite colour	•
White colour	•
Red colour	-
Dish dimensions (mm)	880x880

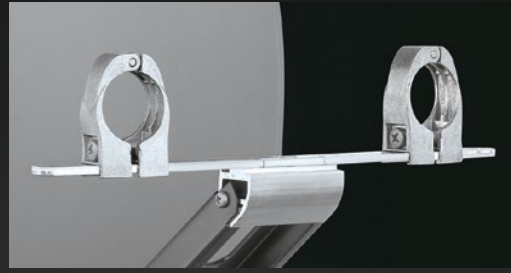
◆ LNB holders



STAR LINE ALU 85



STAR LINE ALU 85 multifeed support (otional)

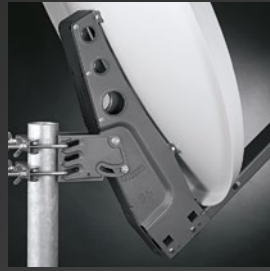


◆ LNB arms



STAR LINE ALU 85

◆ Antenna backstructures



STAR LINE ALU 85

◆ Azimuth/Elevation brackets



STAR LINE ALU 85

STAR LINE ALU

85

Dish dimensions (external)	mm.	880x880
Gain at 10,75 GHz	dB	38,1
Gain at 11,75 GHz	dB	38,7
Gain at 12,75 GHz	dB	39,5
Half power beamwidth at 12,75 GHz	deg.	< 2,1°
Cross polar discrimination on main axis	dB	> 27
Mast clamp for	mm.	32 - 76
Elevation range	deg.	5° - 48°
Elevation with passing pole	deg.	40°
F/D ratio	-	0,6
Offset angle	deg.	21,5°
Windloading at 72 Km/h	Kg	21
Windloading at 144 Km/h	Kg	85
Windloading at 216 Km/h	Kg	192
Feed bracket diameter	mm.	40
Available reflector materials	-	aluminium
Available colours	-	white/anthracite
Back mount	made of:	galvanized steel
AZ/EL holder	made of:	galvanized steel
LNB Arm	made of:	galvanized steel
LNB holder	made of:	aluminium